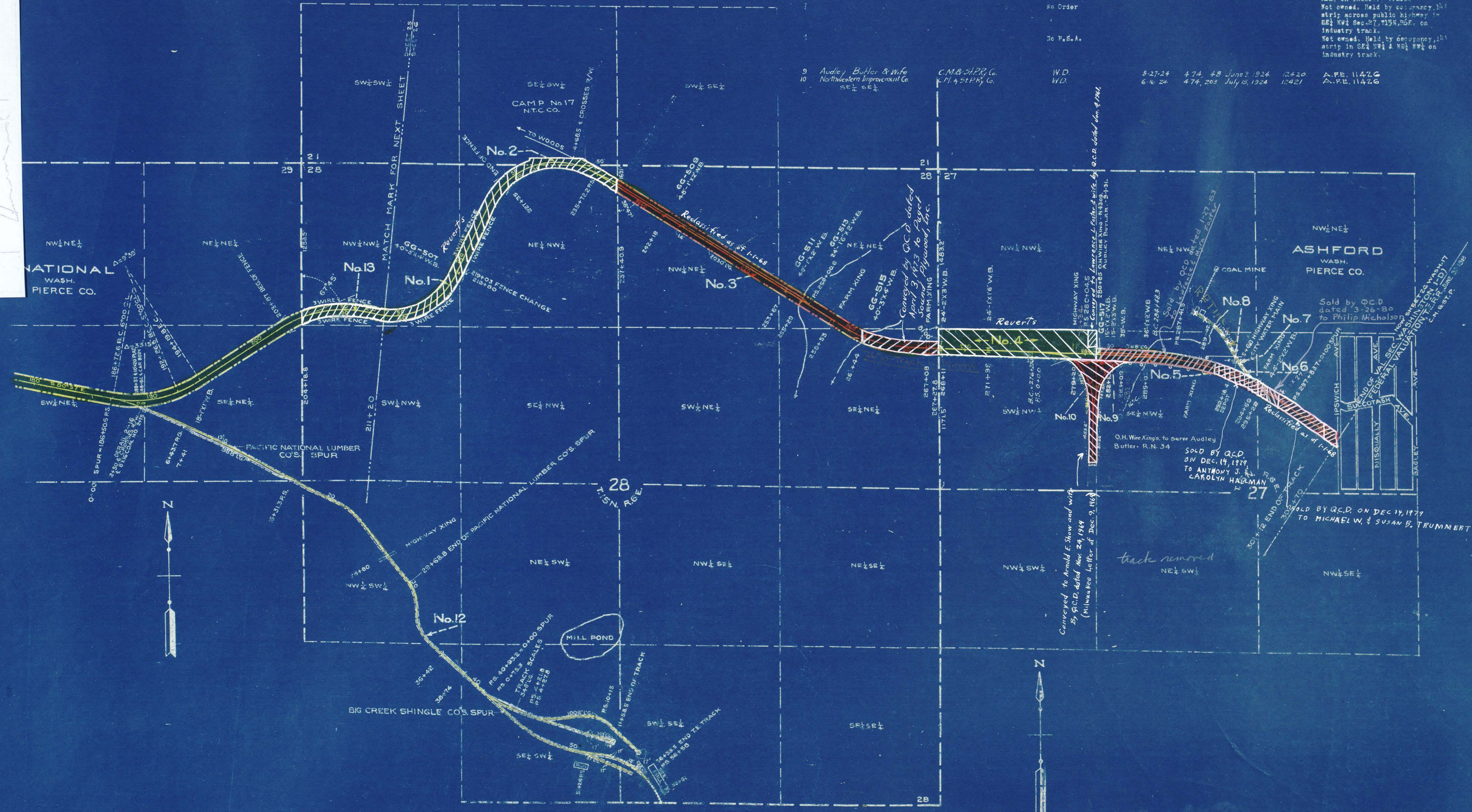


C. M. & ST. P. & RR. CO.
 AMENDED & SHOW AND WIFE
 PROPOSED SALE
 ASHFOORD WASH. PIERCE CO.
 TOWN COUNTY SEATTLE WASH.
 INDUSTRIAL DEPARTMENT DIST. 7, 1918
 SCALE 1 IN. = 400 FT.

PRICE	BUYER	DATE	REMARKS
1	H.K. Cox	1890	
2	Northeastern Improvement Co.	1890	
3	Butler, wife	1891	
4	Northeastern Improvement Co.	1891	
5	Wheeler Coal & Coke Co.	1891	

Not owned. Held by occupancy, but strip in S24 NW1 Sec. 27, T15N R28E.
 Not owned. Held by occupancy, but strip across public highway in S21 NW1 Sec. 27, T15N R28E, on industry track.
 Not owned. Held by occupancy, but strip in S24 NW1 & NW2 SW on industry track.



PRICE	BUYER	DATE	REMARKS
9	Audley, Butler & wife	1892	
10	Northeastern Improvement Co.	1892	

track removed
 NE 1/4 SW 1/4

RIGHT OF WAY AND TRACK MAP
CHICAGO, MILWAUKEE & ST. PAUL RY. CO.
 OPERATED BY THE
 CHICAGO, MILWAUKEE & ST. PAUL RY. CO.

Sheet No. 26, of 27 sheets of C. M. & St. P. Ry. Co. Main Line
 from survey station 211+20 to survey station 302+10
 STATION 211+20 TO STATION 302+10
 SCALE: 1 IN. = 400 FT. JUNE 30 1918
 OFFICE OF VALUATION ENGINEER
 CHICAGO, ILLINOIS

